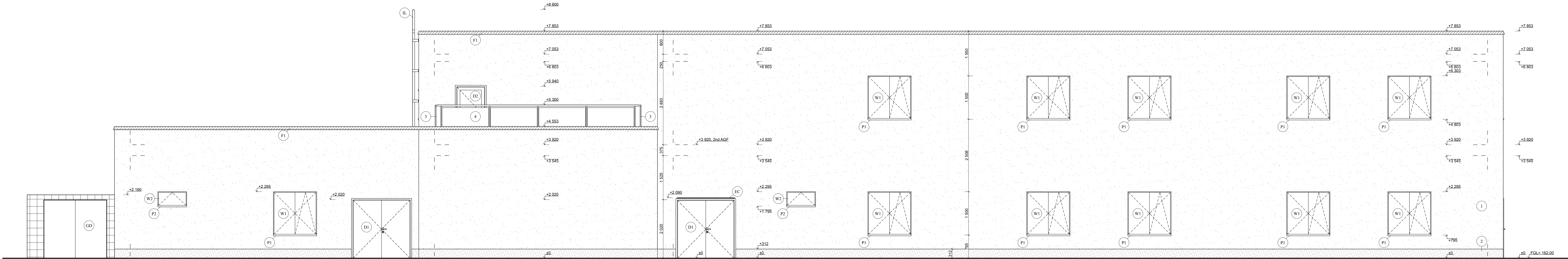


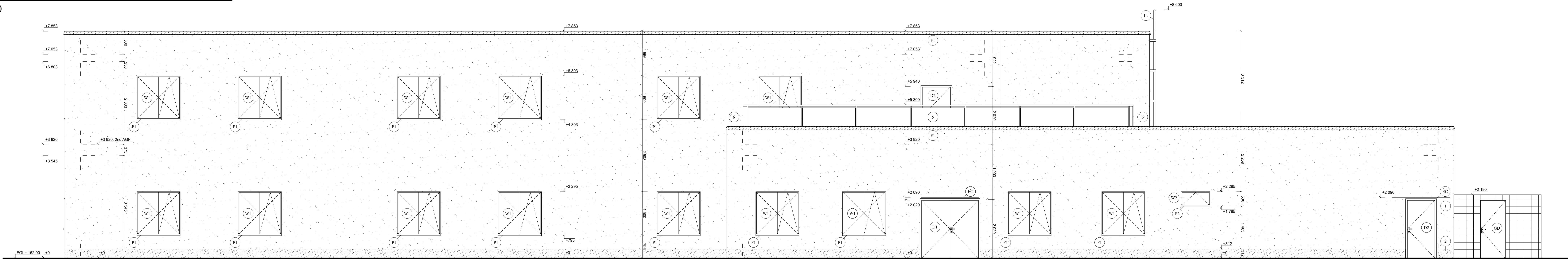
ELEVATION SOUTH-WEST

SC 1:50



ELEVATION NORTH-EAST

SC 1:50



LEGEND OF SURFACES

- 1 THIN-FILM PASTE PLASTER on penetration and cement spraying layer, silicate, 2 mm,
- 2 PLINTH FINISH marmolit layer, 6 mm
- 3 FRAME, external stainless steel banister, steel, glass, total height: 1000 mm, 1000x1650
- 4 FRAME, external stainless steel banister, steel, glass, total height: 1000 mm, 1000x1680
- 5 FRAME, external stainless steel banister, steel, glass, total height: 1000 mm, 1000x1890
- 6 FRAME, external stainless steel banister, steel, glass, total height: 1000 mm, 1000x1950
- W1 FRAME space plus laminated wooden frame, tilting and opening inside, thickness 78 mm, $U_g=0.90$ W/m² *K, Sunlight factor 62 %, Sound dampening 35 dB, GLAZING double glazing filled with argon, $U_g=0.5$ W/m²*K, FITTINGS all-round fitting, safety points, safety against faulty handling, COLOUR black-brown RAL 8022, PARAPET External: galvanized steel sheet, thickness 1.6 mm, expanded length 330 mm, internal: chipboard laminated oak with nose, thickness 20 mm, 1500x1000
- W2 FRAME space plus laminated wooden frame, tilting and opening inside, thickness 78 mm, $U_g=0.90$ W/m² *K, Sunlight factor 62 %, Sound dampening 35 dB, GLAZING double glazing filled with argon, $U_g=0.5$ W/m²*K, FITTINGS all-round fitting, safety points, COLOUR black-brown RAL 8022, PARAPET External: galvanized steel sheet, thickness 1.6 mm, expanded length 330 mm, internal: chipboard laminated oak with nose, thickness 20 mm, 1000x500
- D1 FRAME exterior door, spruce wooden frame, right, laminated timber system, $U_g=1.15$ W/m²*K, opening with translucent glass, type handle - handle, GLAZING double glazing filled with argon, $U_g=0.5$ W/m²*K, FITTINGS 3 safety point door fittings, 2 point safety lock, COLOUR black-brown RAL 8022, THRESHOLD aluminium, 2000x2020
- D2 FRAME exterior door, spruce wooden frame, left, laminated timber system, $U_g=1.15$ W/m²*K, opening with translucent glass, type handle - handle, GLAZING double glazing filled with argon, $U_g=0.5$ W/m²*K, FITTINGS 3 safety point door fittings, 2 point safety lock, COLOUR black-brown RAL 8022, THRESHOLD aluminium, 1000x2020
- EC ENTRANCE CANOPY, tempered glass with inner safety foil, thickness 2x 6 mm, stainless steel anchorage, bars, M14, RAL 9005
- P1 EXTERNAL PARAPET, galvanized steel, thickness 1.6 mm, expanded length 330 mm, total length 1500 mm
- P2 EXTERNAL PARAPET, galvanized steel, thickness 1.6 mm, expanded length 330 mm, total length 1000 mm
- F1 ATTIC FLASHING, galvanized steel, thickness 1.6 mm, expanded length 805, 210, 145 mm, total length 190 290 mm
- GD GARBAGE DOOR, disposal area wall, fencing net
- THIN-FILM PASTE PLASTER on penetration and cement spraying layer, silicate, 2 mm,
- GARBAGE WALL, disposal area wall, fencing net
- PLINTH FINISH marmolit layer, 6 mm
- ATTIC FLASHING, galvanized steel, thickness 1.6 mm, expanded length 805, 210, 145 mm, total length 190 290 mm

0.000 = 162.00 m.a.s.l., B.H.S. / COORDINATE SYSTEM S-JTSK

TYPE OF WORK	DIPLOMA THESIS	<div><div>T</div><div>FAMULTA</div><div>STAVEBNÝ ÚSTAV</div><div>posominho staviteľstvo</div></div>
DRAWN BY	Bc. Richard Šuško	
SUPERVISED BY	Ing. Karol Šimulka	
CUSTOMER	John Davidson, Severozem 2888/9, 902 01, Petržalka-Sťurá hora	
SITE LOCATION	Severozem 2888/9, 902 01 Petržalka-Sťurá hora	<div>PAPER FORMAT</div> <div>16 * A4</div> <div>DATE</div> <div>01/2019</div> <div>PHASE</div> <div>DPS</div> <div>SCALE</div> <div>1:50</div> <div>DRAWING NO.</div> <div>D.1.1.06</div>
PROJECT TITLE	HOTEL	
BUILDING OBJECT	H-1 HOTEL	
PART	D.1.1 - Architectonic Solution	
DRAWING TITLE:	ELEVATION SOUTH-WEST NORTH-EAST	